

# ASTRO: Supporting Composition and Execution of Web Services

M.Trainotti M.Pistore

University of Trento  
Via Sommarive 14  
38050 Povo (Trento) - Italy

G.Calabrese G.Zacco G.Lucchese  
F.Barbon P.Bertoli P.Traverso

ITC-Irst  
Via Sommarive 18  
38050 Povo (Trento) - Italy

## Abstract

Web services are rapidly emerging as the reference paradigm for the interaction and coordination of distributed business processes. In several research papers we have shown how advanced automated planning techniques can be exploited to automatically compose web services, and to synthesize monitoring components that control their execution. In this demo we show how these techniques have been implemented in the ASTRO toolset (<http://astroproject.org>), a set of tools that extend existing platforms for web service design and execution with automated composition and execution monitoring functionalities.

## Introduction

Web services are rapidly emerging as the reference paradigm for the interaction and coordination of distributed business processes. The ability to automatically plan the composition of web services, and to monitor their execution, is therefore an essential step toward the real usage of web services.

In previous works (1; 2; 3), we have shown how automated planning techniques based on the “Planning via Model Checking” paradigm can effectively support these features, taking as input modelings of web services which derive from specifications in BPEL4WS, a standard language for specifying web services interfaces and execution.

Automated web service composition starts from the description of a number of protocols defining available external services (e.g., expressed as BPEL4WS specifications), and a “business requirement” for a new composed process (i.e., the goal that should be satisfied by the new service, expressed in a proper goal language). Given this, the planner must synthesize automatically the code that implements the internal process that, exploiting the services of the external partners, achieves the business goal. This code is then emitted in some process execution language, such as executable BPEL4WS.

The automated synthesis techniques provided by the “Planning via Model Checking” framework can be also exploited to generate process monitors, i.e., pieces of code that detect and signal whether the external partners behave consistently with the specified protocols. This is vital to detect unpredictable run-time misbehaviors (such as those that may originate by dynamic modifications of the partners’ protocols), or other events in

the executions of the web services that need to be reported and analyzed.

Notice that these problems require dealing with non-determinism (since the behavior of external services cannot be foreseen a priori), partial observability (since their status is opaque to the composed service), and extended goals (since realistic business requirements specify complex expected behaviors rather than just final states). By tackling the problem of composing and monitoring web services, we have shown the capabilities of the “Planning via Model Checking” approach in realizing such a complex planning task.

In this demo we show how these techniques can extend existing commercial platforms for web service design and execution. More precisely, we describe the ASTRO toolset (<http://astroproject.org>), which implements automated composition and monitor generation functionalities as extensions of the Active WebFlow platform. Active WebFlow (<http://www.activebpel.org/>) is a commercial tool for designing and developing BPEL4WS processes which is based on the Eclipse platform. It also provides an open-source BPEL4WS execution engine (called Active BPEL). By implementing automated composition and monitoring within Active WebFlow, these advanced functionalities can be combined with the other “standard” functionalities provided by the platform (such as inspecting BPEL4WS code, writing or modifying business processes, deploying these processes and executing them) and become integral part of the life cycle of business process design and execution.

## A service composition scenario

The demo is based on a classical Web service composition problem, namely that of the Virtual Travel Agency (VTA). It consists in providing a combined flight and hotel booking service by composing two separate, independent existing services: a Flight booking service, and a Hotel booking service.

The Hotel booking service becomes active upon a request for a room in a given location (e.g., Paris) for a given period of time. In the case the booking is not possible (i.e., there are no available rooms), this is signaled to the request applicant, and the protocol terminates with failure. Otherwise, the applicant is notified with information about the hotel (e.g., Hilton), cost of the room, etc. and the protocol stops waiting for either a positive or negative acknowledgment. In the first case, an agreement has been reached and the room is booked.

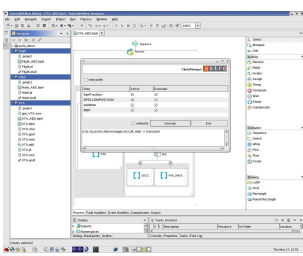


Fig. 1: WS-gen

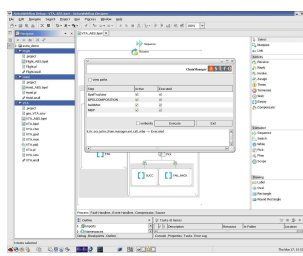


Fig. 2: WS-mon

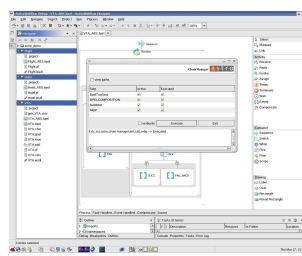


Fig. 3: WS-console

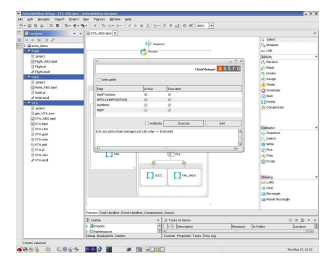


Fig. 4: WS-animator

In the latter case, the interaction terminates with failure.

The protocol provided by the Flight booking service is similar. It starts upon a request for flights that guarantee to stay in a given location (e.g., Paris) for a given period of time. This might not be possible, in which case the applicant is notified, and the protocol terminates failing. Otherwise, information on the flights (carrier, cost, schedule...) are computed and returned to the applicant. The protocol suspends for either a positive or negative acknowledgment, terminating (with success or failure resp.) upon its reception.

The expected protocol that the user will execute when interacting with the VTA goes as follows. The user sends a request to stay in a given location during a given period of time, and expects either a negative answer if this is not possible (in which case the protocol terminates, failing), or an offer indicating hotel, flights and cost of the trip. At this time, the user may either accept or refuse the offer, terminating its interaction in both cases.

Of course several different interaction sequences are possible with these services; e.g., in a *nominal* scenario, none of the services answers negatively to a request; in non-nominal scenarios, unavailability of suitable flights or rooms, as well as user refusals, may make it impossible to reach an agreement for the trip. Taking this into account, the business requirement for the composed service is composed of two subgoals. The “nominal” subgoal consists in reaching the agreement on flights and room. This includes enforcing that the data communicated to the various processes are mutually consistent; e.g., the number of nights booked in the hotel depends on the schedule of the selected flights. The “recovery” subgoal consists in ensuring that every partner has rolled back from previous pending requests, and must be only pursued when the nominal subgoal cannot be achieved anymore.

By composition of the VTA process, we mean the automated generation of the code that has to be executed on the VTA server, so that requests from the user are answered combining the Flight and Hotel services in a suitable way. This composition has to implement the two sub-goals described above.

After the VTA process has been generated, its executions must be monitored, in order to detect problems in the interactions with the other partners participating to the scenario. Properties to be monitored include “correctness” checks (e.g., the partners obey the declared protocols; the flight schedules are compatible with the requests...). It is also possible to monitor “business”

properties, such as the fact that, when an offer for a trip is sent to the user, this offer gets accepted or not.

## The ASTRO toolset

The demo illustrates the four software components provided by the ASTRO toolset on the VTA scenario.

WS-gen (see Fig.1) is responsible of generating the automated composition. It takes as input the BPEL4WS specifications of the interaction protocols that the composite service has to implement (in our case, the protocols of the VTA with User, Flight, and Hotel), a “choreographic” file describing the connections between the partners of the composition (VTA, User, Flight, Hotel), and a goal file defining the composition requirement. WS-gen is an Eclipse plugin, and is hence integrated with the Active WebFlow environment.

WS-mon (see Fig.2) is responsible of generating the Java code implementing the monitors for the composed process. Similarly to WS-gen, it takes as input BPEL4WS specifications and a “choreographic” file, while the goal file is replaced by a file specifying the properties to be monitored. Also WS-mon is an Eclipse plugin. Moreover, the monitor framework includes an extension of the Active WebFlow BPEL execution engine, which sniffs the input/output messages directed to the monitored process and directs them to the Java monitors produced by WS-mon.

WS-console (see Fig.3) extends the Active WebFlow administrative console in order to include the status of the monitors associated to each process instance. In this way, violations of the monitored properties are easy to detect.

WS-animator (see Fig.4) is another Eclipse plugin, which gives to the user the possibility to “execute” the composite process (in our case, the VTA). More precisely, it allows the user to play the roles of the actors interacting with the composite process (User, Flight, and Hotel in our case), while the Active WebFlow engine executes it.

## References

- [1] Pistore, M.; Barbon, F.; Bertoli, P.; Shaparau, D.; and Traverso, P. 2004. Planning and Monitoring Web Service Composition. In *Proc. AIMS'04*.
- [2] Pistore, M.; Traverso, P.; and Bertoli, P. 2005. Automated Composition of Web Services by Planning in Asynchronous Domains. In *Proc. ICAPS'05*.
- [3] Pistore, M.; Marconi, A.; Bertoli, P.; and Traverso, P. 2005. Automated Composition of Web Services by Planning at the Knowledge Level. In *Proc. IJCAI'05*.